

PPE at a Glance ...

The PPE Module is a multi-functional programmer for Microchip® PIC™ FLASH microcontrollers*. These controllers can be reprogrammed a large number of times, making it easy to upgrade the firmware of a device, or allowing the user the freedom of experimenting with code without wasting devices. Different MCU types can be programmed and various LEDs and push-button switches allow the testing of small circuits on the programmer unit.

Using this module for programming consists of two important stages: in the first stage, program code is written on a development system (like Microchip's MPLAB), and compiled into object code.

In the second stage, the compiled code is downloaded ("burned") into the processor via the PPE Module and software utilities. The PPE has provisions for direct programming of many PIC devices with 8-pin, 14-pin, 18-pin, and 28-pin footprints. Other footprints can be accommodated by using the ICSP connector on the board.

One PIC MCU is included in the package to enable experimentation right away.

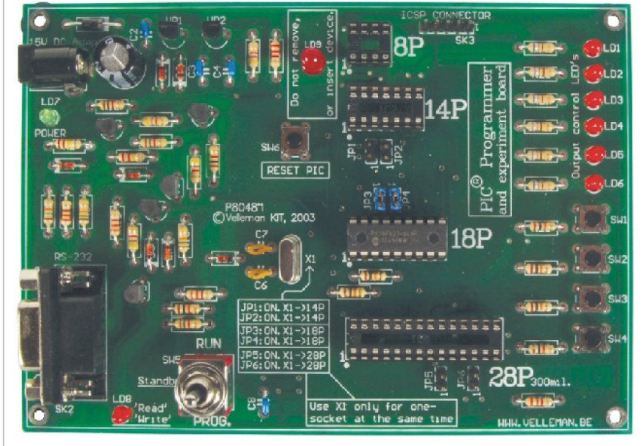
Features

- ❖ Supports Microchip FLASH MCU's with 4 different 300 mil. footprints: 8p, 14p, 18p and 28p
- ❖ Test buttons and LED indicators to carry out educational experiments, such as the enclosed programming examples
- ❖ Easy connection to a PC through the serial port
- ❖ Enclosed Flash Microcontroller (PIC16F627) that can be reprogrammed up to 1000 times for multiple experimentation
- ❖ Software to compile and program your source code is available on our website
- ❖ Minimum system requirements:
 - IBM Compatible PC, Pentium or better
 - Windows™ 95/98/ME/NT/2000/XP
 - CDROM
 - Free serial RS232 port
 - Serial cable

Ordering Information

PPE Lab Module PPE-LM-010
 Serial Cable, DB-09, M/F, 6 ft DB9-06-MF

PPE Board



Specifications

- Power: 12 – 15 V DC @ 300 mA, non-regulated AC-DC adapter.
- Flash MCUs supported:
- PIC12F629, PIC12F675, PIC16F84A, PIC16F871-874, PIC16F876, PIC16F627A, PIC16F628A, PIC16F630... (Please visit our web site for the complete updated list)
- Dimensions: 145 mm x 100 mm (5.75" x 4.0")